

Monday to Friday Mt. Fuji Program



Overview

- **Starts Every Monday!**

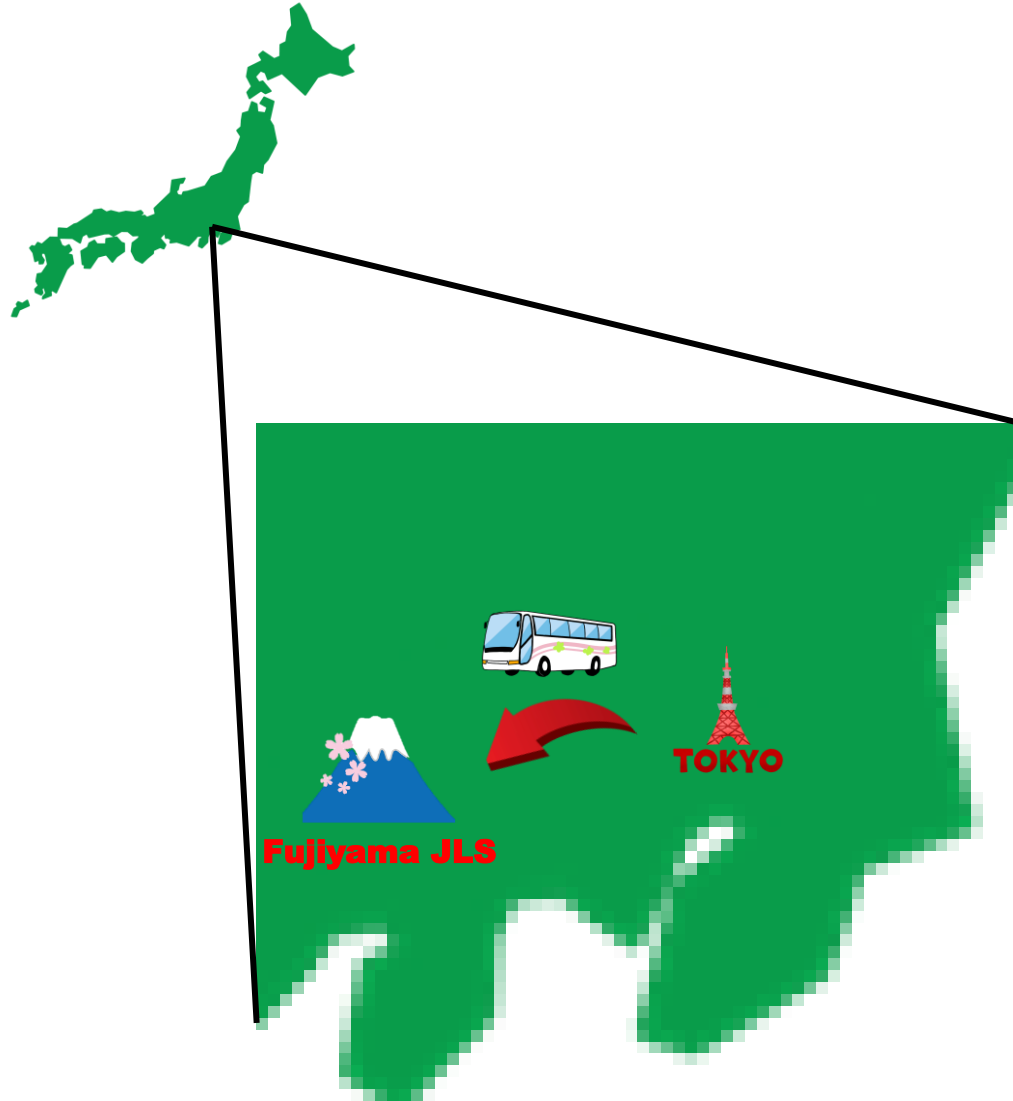
- **One unit ; Check-in on Sunday, classes Monday through Friday.**

You Can join from 1 unit up to 4 units.

- **All-in-One**

Japanese Language Class & Cultural Activities & Lodging

Where is Fujiyama JLS located?



東京から高速バスで1時間半

1 hour and a half from Tokyo by bus.

世界的な観光地、富士山のすぐそば。

近くには5つの湖、レストラン、着物美術館、オルゴール美術館、富士山世界センター、絶叫マシーンで有名なアミューズメントパークなどもあります。

The school is located near the world-famous tourist destination, Mt. Fuji .

There are five lakes, many restaurants (Not tourist price), a kimono museum, a music box museum, the Mt. Fuji World Center, and an amusement park famous for its screaming machines!

We are Here! How about you?



Why not enjoy a few weeks of your lifetime at the foot of Mt.Fuji.
Enjoy a new challenge and a new experience!
Our friendly staff will welcome you.

MFMF Monday to Friday Mt. Fuji Program

Fujiyama JLS also offers the following short-term study abroad

Weekdays



AM



PM

Weekend



Dormitory



午前中は教室で日本語を学び、午後はみんなで文化体験に出かけます。
週末の自由時間は東京などに足を延ばして観光することもできます。
ホテルの心配は必要ありません！
ふじやま国際学院には富士山が見えるすてきな寮があります。

In the morning we have Japanese class, and in the afternoon we all go out together to experience culture. You can use your free time on weekends to go sightseeing in the surrounding area. No need to worry about hotels, Fujiyama JLS has a nice Japanese-style dormitory.

日本語授業

About Japanese Language classes



LESSONS

授業概要 Lessons Outline	
授業日 Classes	月曜日～金曜日（祝祭日を含む） 1日3時間 Monday - Friday (including national holidays) 3 hours a day: 9:00 a.m. – 11:50 a.m. (50min × 3)
クラス学生数 Number of students	平均6名 お一人からご参加いただけます。 Average of about 6 persons One person can participate.
レベル Levels	入門～初級 Total beginner to beginner 特別なご要望がなければ、ひらがなや漢字は扱わず、会話を中心に学びます。 Hiragana alphabet and Kanji characters will not be taught unless specifically requested. Basically, the class focuses on speaking.

**If you understand a little Japanese,
your trip to Japan will be 150% more enjoyable.**



文化理解・アクティビティ Cultural Understanding & Activities

今だけ、ここだけ、あなただけ
Just for Now, Just for Here, Just for You



Fixed activities; Activities included in the program



Old houses Visiting and wear Kimono

There is an area lined with thatched houses by a lake Saiko. MT, Fuji can be seen beautifully, and visitors can try on kimonos.

Fixed activities; Activities included in the program



The Loyalty Pagoda Visiting

Fuji and the five-story pagoda can be seen together.
If you draw a fortune at the shrine, it will tell you your future.

Fixed activities; Activities included in the program



Japanese Cooking Class

Cooking with Japanese people.

Learn how to cook and please serve them to your friends and family when you back home.

Menu will change depending on timing and season.

If you have any requests, please comment.

Optional activities

Hiking and cave walk

Fuji eruption, the lava rocks have a high iron content, and the magnetic compass does not accurately point north, which is why many people used to get lost.

Once you entered the forest, you could not get out.

This activity does not take such risks and follow the well-maintained rules.

We will also explore a cave created by lava.



Optional activities

Stand Up Paddleboard

First-time ? No worries !

At first, you can paddle sitting down, and when you get used to it, you can stand up.
Depending on the weather, a different menu may be offered. Those who have already paid will be refunded the difference.



Optional activities

Skiing / Snowboarding

Let's ski Mt. Fuji!

There is a ski resort area near the school with a full beginner courses!
The cost includes transportation to the ski resort, wear and ski or snowboard rental,
and lift fees.



Optional activities

Sake brewery tour

Rainwater that falls on Mt. Fuji is filtered over a period of 50 years to produce very mellow water.

We will visit a local sake brewery that uses this water to make sake and whiskey, and taste the products. Minors are also welcome to visit.



Optional activities

Calligraphy

Character is heart!

When you write beautifully, your heart is also beautiful.

You can make your own original T-shirts by writing on your own T-shirts.

The characters will not fade away even after washing.



Optional activities

Tea ceremony

Why not enjoy the harmony of slightly bitter tea and seasonal sweets?

Once-in-a-Lifetime Meeting 一期一会 (Ichigo-ichie)

Let's enjoy this moment in your life, only now, only here only us.



寮での生活

Life in Fujiyama's dormitory



ふじやま東寮

Fujiyama JLS Dormitory



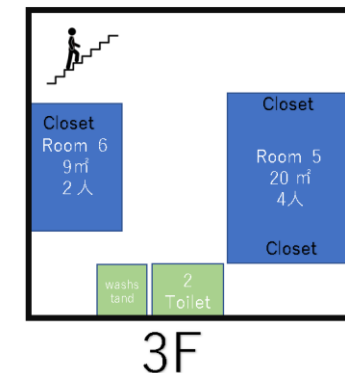
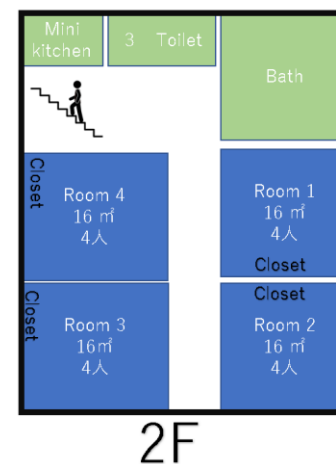
ふじやま国際学院の寮は富士山の見えるすてきな寮。
洗濯機、冷蔵庫、キッチンコンロ、お風呂もあります。
当然Wi-fiも完備です。

Fujiyama JLS has a beautiful dormitory with a view of Mt.Fuji
There is a washing machine, a refrigerator, a kitchen stove, and a bath.

Of course, Wi-fi is available.

この寮には10畳の和室が4室。12畳と5畳の洋室が1室ずつあります。
This dormitory has four Japanese-style rooms of approximately 16m². meters, and two Western-style rooms of 10m² and 20m².

自炊のためのキッチンやトイレ、シャワーは共用です。
Kitchens for self-catering, toilets and showers are shared.



寮の周辺

Around the dormitory



Fujiyama dormitory



ふじやま寮の近くには、コンビニやスーパー、安価な飲食店から高級な和食店などがあります。大人は居酒屋でおいしい日本酒を楽しむことができます。いずれも徒歩10～20分圏内にあります。

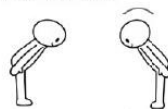




Near Fujiyama Dormitory, there are convenience stores, supermarkets, inexpensive restaurants, and Japanese-style restaurants. Adults can also enjoy a good “SAKE” at an izakaya (Japanese style bar). All of these are located within a 10 to 20 minute walk.

参加費

Fees



List of Fees

		1 Unit	2 Units	3 Units	4 Units
1 person (shared room) 	Tuition	¥80,000	¥150,000	¥210,000	¥250,000
	Accommodation fee	¥40,000	¥80,000	¥120,000	¥160,000
	Total	¥120,000	¥230,000	¥330,000	¥410,000
1 person (private room) 	Tuition	¥80,000	¥150,000	¥210,000	¥250,000
	Accommodation fee	¥80,000	¥150,000	¥210,000	¥250,000
	Total	¥160,000	¥300,000	¥420,000	¥500,000
Pair of 2 (private room) 	Tuition	¥160,000	¥300,000	¥420,000	¥500,000
	Accommodation fee	¥80,000	¥150,000	¥210,000	¥250,000
	Total for 2	¥240,000	¥450,000	¥630,000	¥750,000
Group of 3 (private room) 	Tuition	¥240,000	¥450,000	¥630,000	¥750,000
	Accommodation fee	¥80,000	¥150,000	¥210,000	¥250,000
	Total for 3	¥320,000	¥600,000	¥840,000	¥1,000,000
Group of 4 (private room) 	Tuition	¥320,000	¥600,000	¥840,000	¥1,000,000
	Accommodation fee	¥80,000	¥150,000	¥210,000	¥250,000
	Total for 4	¥400,000	¥750,000	¥1,050,000	¥1,250,000

1 Unit; 5 nights, 6 days. 15 hours of class time.

2 Units; 12 nights 13 days. 30 hours of class time.

3 Units; 19 nights 20 days. 45 hours of class time.

4 Units, 26 nights 27 days. 60 hours of class time.

Price including tax

Fixed activities (3 times a week) are free of charge.

Optional activities change depending on the season. Please contact us for details.

Lunch (bento box) delivery is available. The cost is about 500 yen per meal. Vegetarian and Halal food are also available.



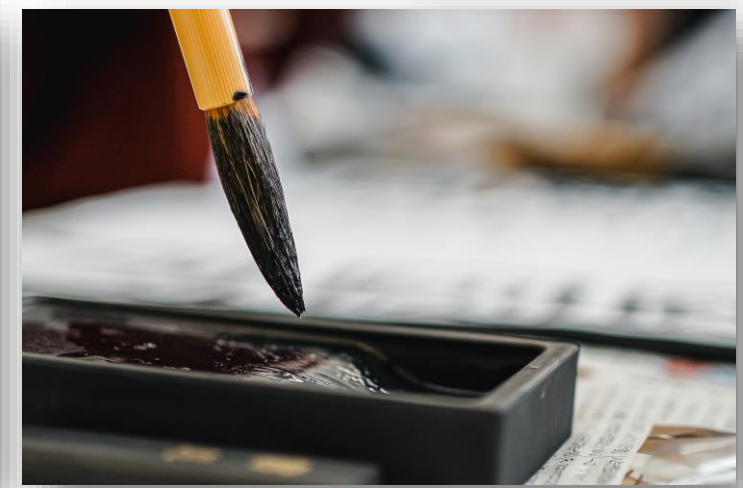
Optional Tour Fees Per person



<i>Hiking and cave walks</i>	¥9,000
<i>Stand Up Paddle Board</i>	¥9,000
<i>Skiing / Snowboardig</i>	¥25,000
<i>Sake brewery tour</i>	¥8,000
<i>Tea ceremony</i>	¥7,000
<i>Calligraphy</i>	¥7,000



price including tax



See you soon



ふじやま国際学院
Fujiyama Japanese
Language School

