

Dear Future Student !

Fujiyama Japanese Language School

## How to make an application by WSDB

### WSDB (On-line application form system)

WSDB is a system to make an application form. This is on-line system and you can fill up your information by using your smartphone.

We will submit the documents to the Immigration Bureau based on the information you entered, so please make sure there are no mistakes.

#### Step 1

You can download application from [Google Play](#) or [Apple Store](#).

Search by keyword “WSDB”



#### Step 2

Fill up your Login ID and Password

A screenshot of the WSDB login page. At the top is the WSDB logo and the text 'World Students' DataBase' and '世界の学生の夢を叶える架け橋'. Below this are two input fields: 'ユーザー名' (Username) and 'パスワード' (Password), both highlighted with red rectangular boxes. At the bottom is a blue button labeled 'ログイン' (Login).

Your

Login ID [We will notify you by e-mail]

Password [We will notify you by e-mail]

※Please be careful about the case when entering.

For example “A” & “a” are different letter.

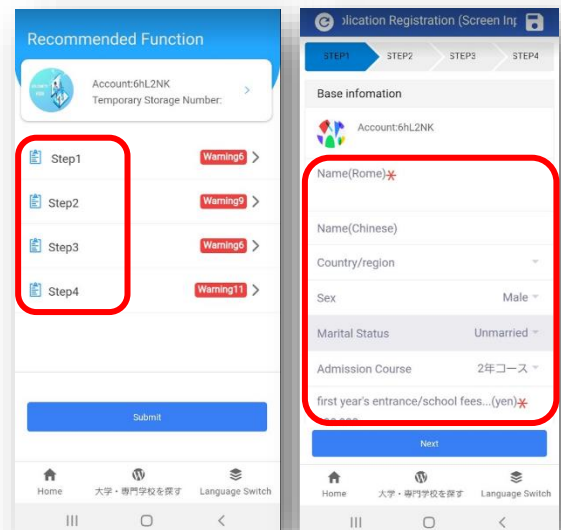
### Step 3

Choose the language you like from the lower right button.



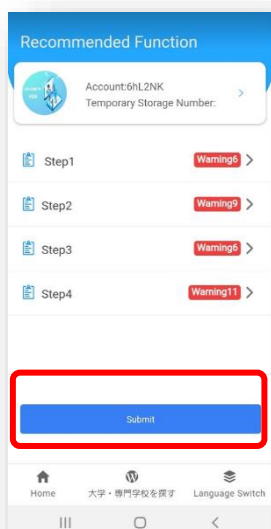
### Step 4

Fill up your information!  
It will be saved automatically.



### Step 4

The data you filled in are automatically saved and when you login into the account next time, you can continue to fill in the other items.  
When you have all done, please submit it.



**ふじやま国際学院**  
**Fujiyama Japanese**  
**Language School**



Any questions, please contact us!

Facebook

<https://www.facebook.com/FujiyamaSmile/>

E-Mail: [fujiyamajls@gmail.com](mailto:fujiyamajls@gmail.com)